

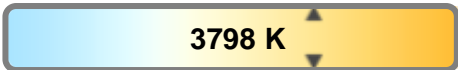
Light efficiency:



Light quality:



Color temperature:



Output: 1058 lm

Peak: 8069 cd

Power: 27.4 W

PF: 0.99



Tracking number: [n/a](#)

Product name:

Dotz Par RGBL

Item number:

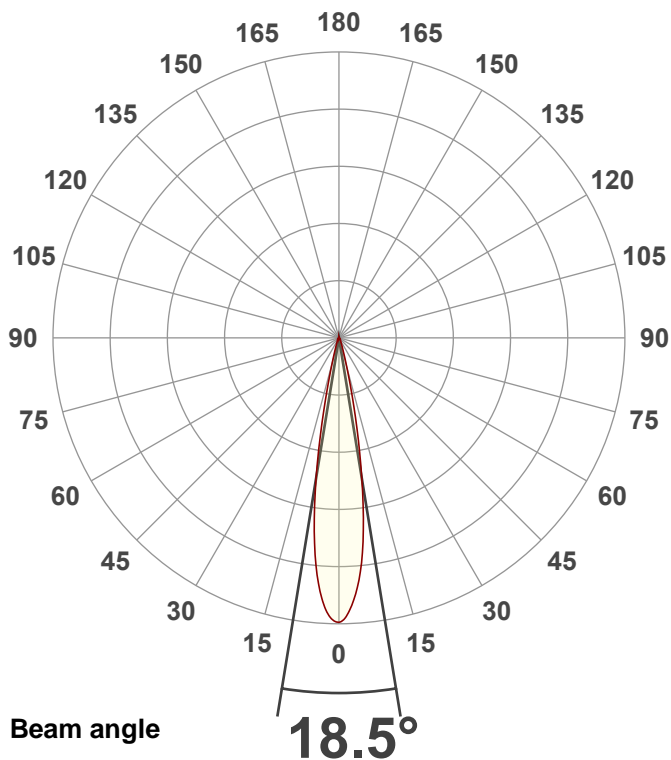
4000K

Date and time:

7/11/2024 11:16:47 AM

Description:

@ 61

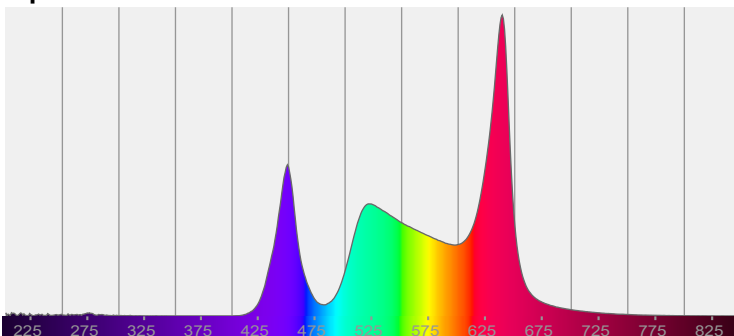


CIE 1931

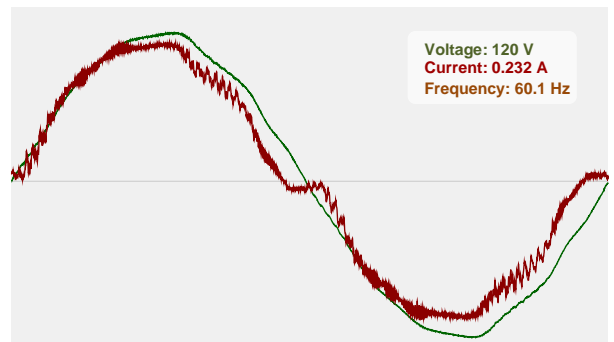
x: 0.385

y: 0.366

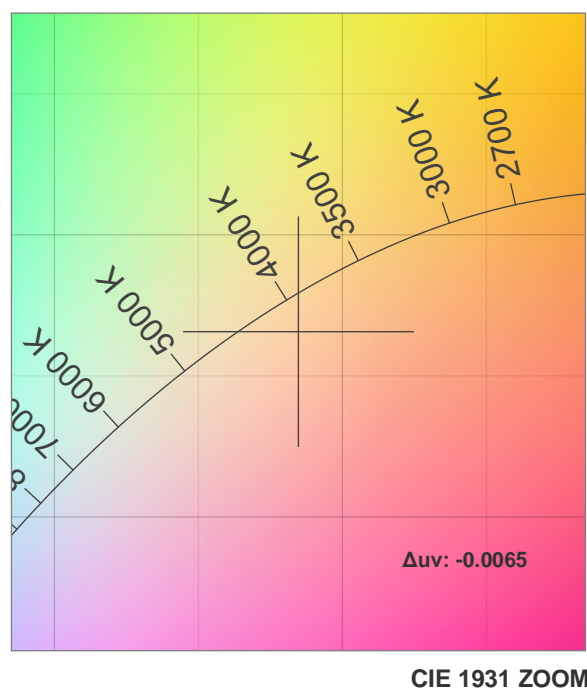
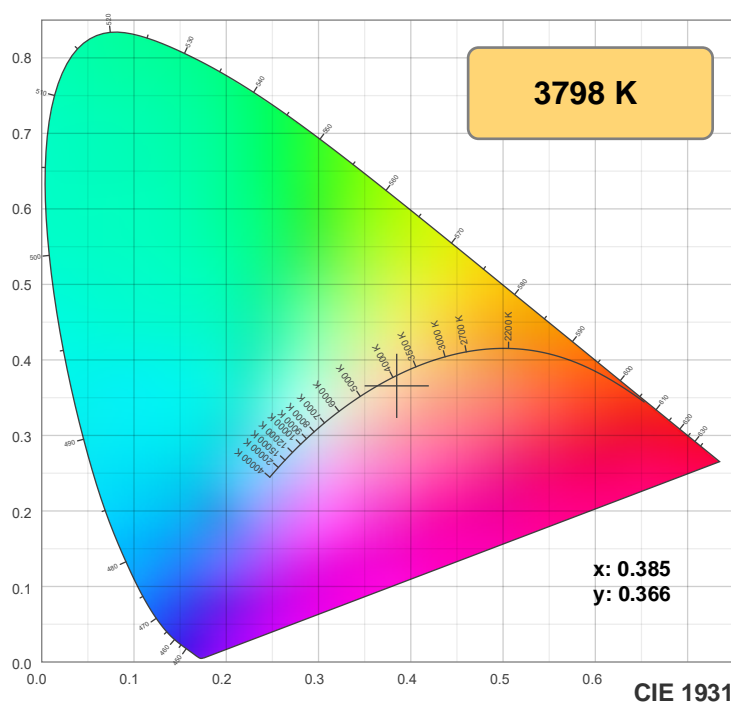
Spectra



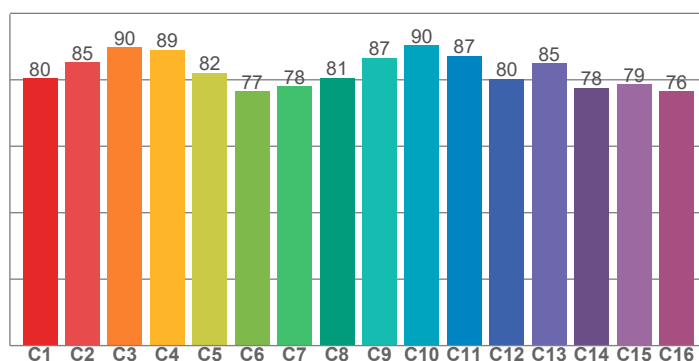
Power



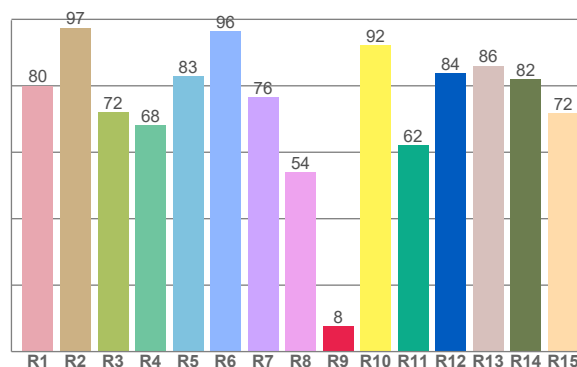
Color details



TM-30: 83.2



CRI: 78.4 (R1-R8)



CRI R values, only R1-R8 are used to calculate final CRI value

R1	R2	R3	R4	R5	R6	R7	R8	R9	R10	R11	R12	R13	R14	R15
80.0	97.5	71.9	68.2	82.9	96.5	76.5	53.9	7.6	92.2	62.2	83.8	86.0	82.0	71.7

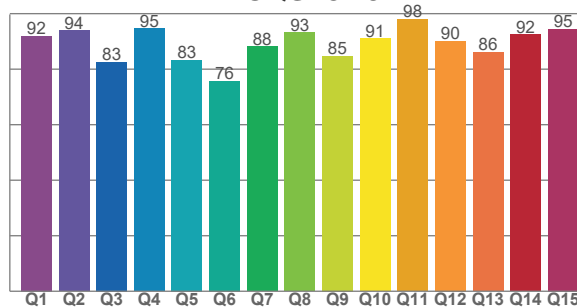
TM30 C values, 16 binned values out of total of 99 C values

C1	C2	C3	C4	C5	C6	C7	C8	C9	C10	C11	C12	C13	C14	C15	C16
80.4	85.2	89.8	89.0	82.1	76.6	78.0	80.5	86.6	90.4	87.1	80.3	85.0	77.6	78.6	76.5

CQS Q values

Q1	Q2	Q3	Q4	Q5	Q6	Q7	Q8	Q9	Q10	Q11	Q12	Q13	Q14	Q15
92.0	93.8	82.6	94.7	83.3	75.7	88.1	93.1	84.8	91.0	98.0	90.2	86.1	92.4	94.5

CQS: 87.9



Color parameters

Color temperature	Color rendering index	Red component	Color fidelity	Color gamut	Color quality scale	Color coordinate cie 1931	Color coordinate cie 1931	Color coordinate	Color coordinate	Color deviation from black body
CCT	CRI	CRI R9	TM30 Rf	TM30 Rg	CQS	x	y	u	v	Δuv
3798 K	78.4	7.6	83.2	115.9	87.9	0.385	0.366	0.233	0.331	-0.0065

TM-30 details

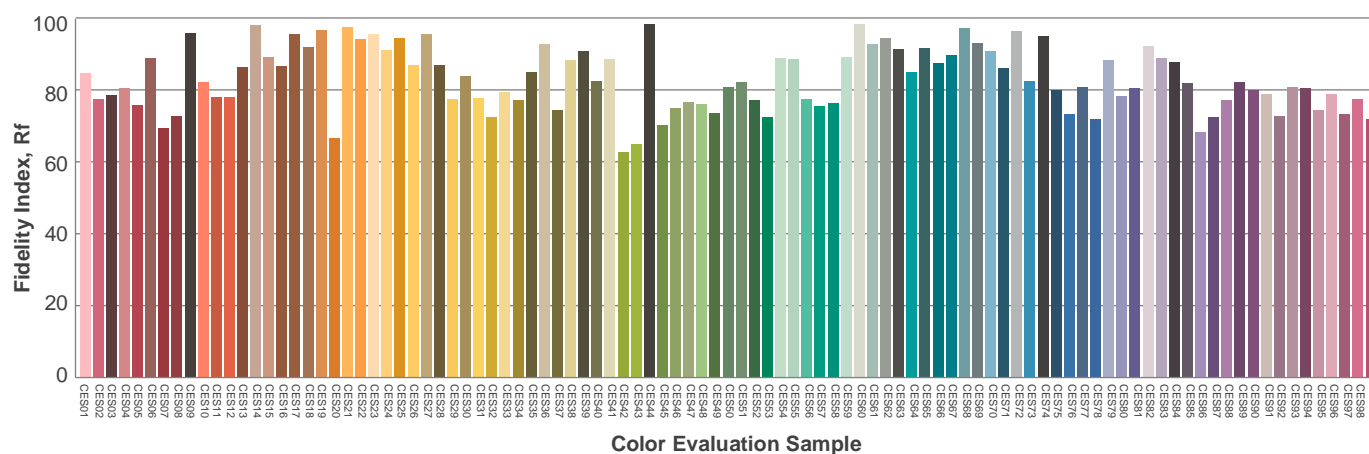
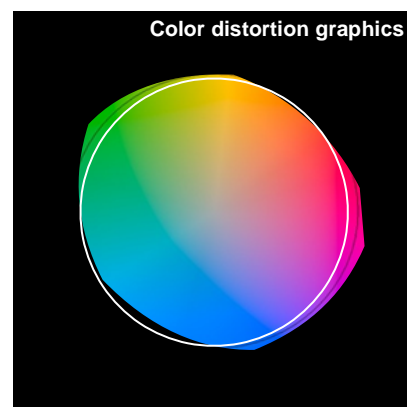
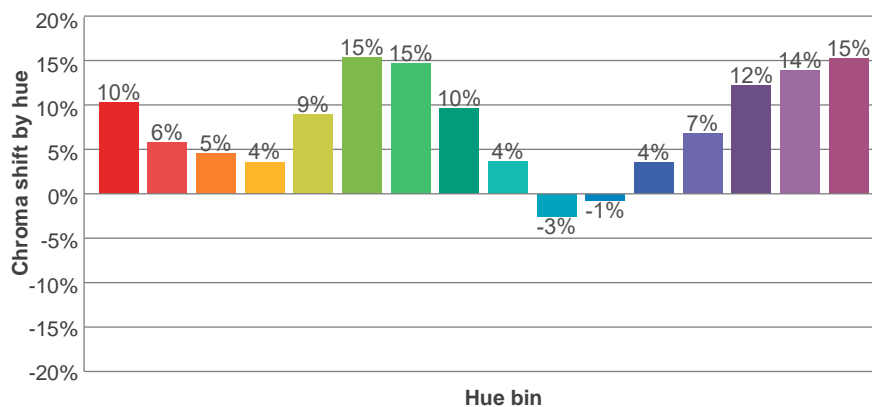
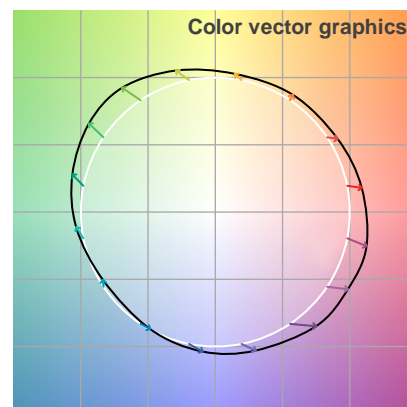
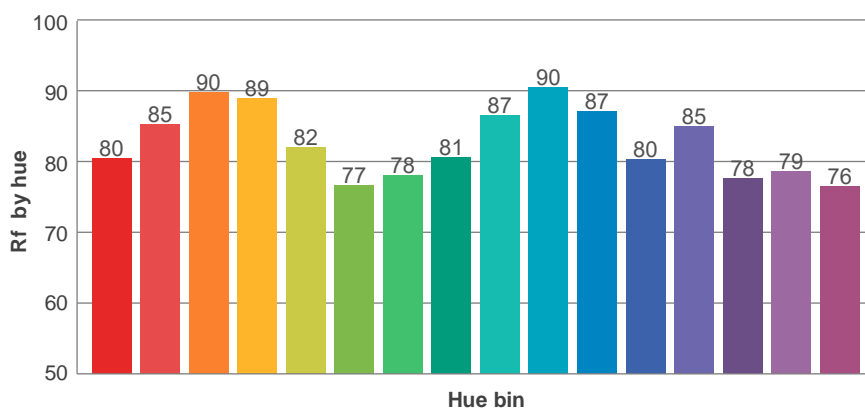
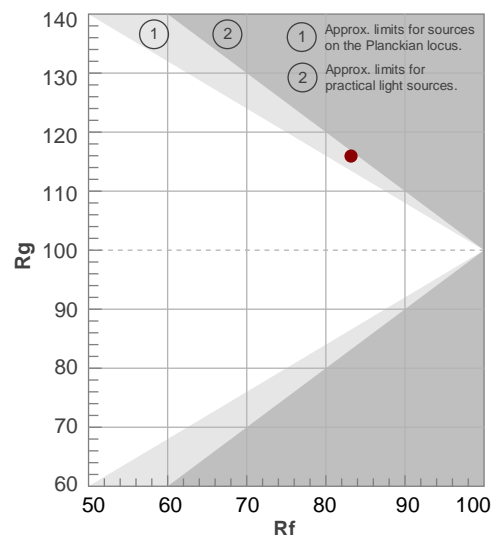
Rf 83.2

Fidelity index Rf

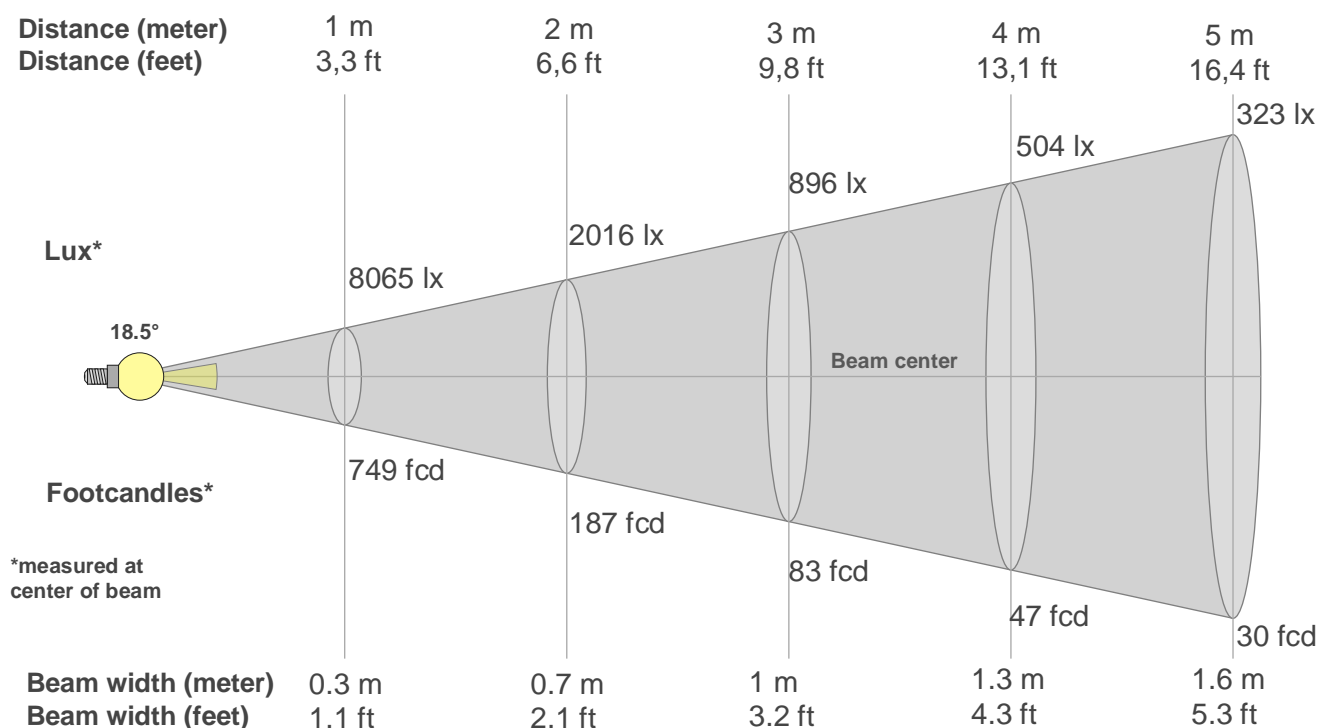
Rg 115.9

Gamut index Rg

Hue Bin	R _i	Shifts (%)	
		Chroma	Hue
1	80	10%	-4%
2	85	6%	-5%
3	90	5%	1%
4	89	4%	6%
5	82	9%	8%
6	77	15%	6%
7	78	15%	-3%
8	81	10%	-7%
9	87	4%	-9%
10	90	-3%	-4%
11	87	-1%	8%
12	80	4%	11%
13	85	7%	9%
14	78	12%	15%
15	79	14%	7%
16	76	15%	-3%



Beam details



Beam intensities from 1-20m

1m	2m	3m	4m	5m	6m	7m	8m	9m	10m	11m	12m	13m	14m	15m	16m	17m	18m	19m	20m
3.3ft	6.6ft	9.8ft	13.1ft	16.4ft	19.7ft	23ft	26.2ft	29.5ft	32.8ft	36.1ft	39.4ft	42.7ft	45.9ft	49.2ft	52.5ft	55.8ft	59.1ft	62.3ft	65.6ft
8065lx	2016lx	896lx	504lx	323lx	224lx	165lx	126lx	100lx	81lx	67lx	56lx	48lx	41lx	36lx	32lx	28lx	25lx	22lx	20lx
749.3fcd	187.3fcd	83.3fcd	46.8fcd	30fcd	20.8fcd	15.3fcd	11.7fcd	9.3fcd	7.5fcd	6.2fcd	5.2fcd	4.4fcd	3.8fcd	3.3fcd	2.9fcd	2.6fcd	2.3fcd	2.1fcd	1.9fcd

Intensities in 0° c-plane

0°	1°	2°	3°	4°	5°	6°	7°	8°	9°	10°	11°	12°	13°	14°	15°	16°	17°	18°	19°
8065	7987	7793	7519	7181	6767	6262	5646	4955	4215	3483	2791	2154	1613	1187	871	659	505	396	323
100%	99%	97%	93%	89%	84%	78%	70%	61%	52%	43%	35%	27%	20%	15%	11%	8%	6%	5%	4%

Intensities in 90° c-plane

0°	1°	2°	3°	4°	5°	6°	7°	8°	9°	10°	11°	12°	13°	14°	15°	16°	17°	18°	19°
8065	7987	7793	7519	7181	6767	6262	5646	4955	4215	3483	2791	2154	1613	1187	871	659	505	396	323
100%	99%	97%	93%	89%	84%	78%	70%	61%	52%	43%	35%	27%	20%	15%	11%	8%	6%	5%	4%

Intensities in 180° c-plane

0°	1°	2°	3°	4°	5°	6°	7°	8°	9°	10°	11°	12°	13°	14°	15°	16°	17°	18°	19°
8065	8028	7893	7655	7313	6878	6346	5713	4999	4224	3436	2661	1980	1435	1034	751	560	432	342	279
100%	100%	98%	95%	91%	85%	79%	71%	62%	52%	43%	33%	25%	18%	13%	9%	7%	5%	4%	3%

Intensities in 270° c-plane

0°	1°	2°	3°	4°	5°	6°	7°	8°	9°	10°	11°	12°	13°	14°	15°	16°	17°	18°	19°
8065	8028	7893	7655	7313	6878	6346	5713	4999	4224	3436	2661	1980	1435	1034	751	560	432	342	279
100%	100%	98%	95%	91%	85%	79%	71%	62%	52%	43%	33%	25%	18%	13%	9%	7%	5%	4%	3%

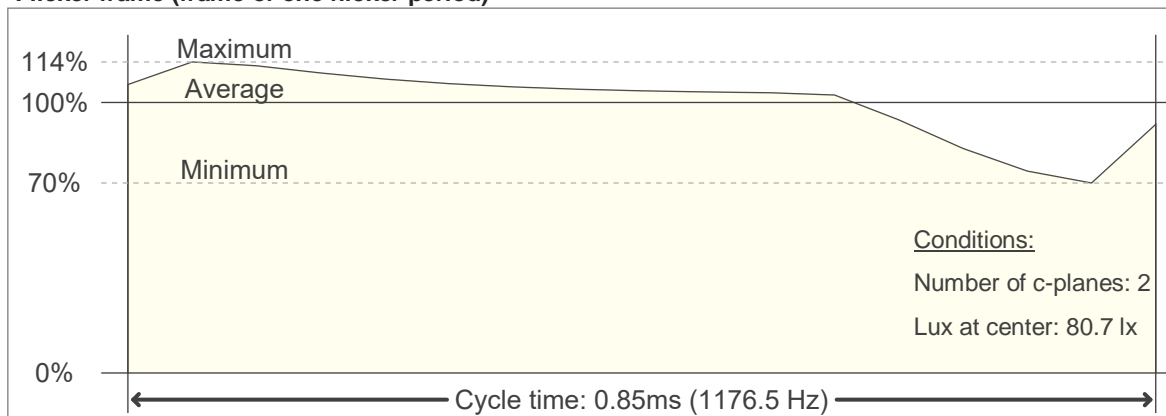
Beam angle 50%	Field angle 10%	Cutoff angle 2,5%	Intensity ratio in 120° cone	Intensity ratio in 90° cone
18.5°	30°	43°	96.4%	91.0%

Flicker

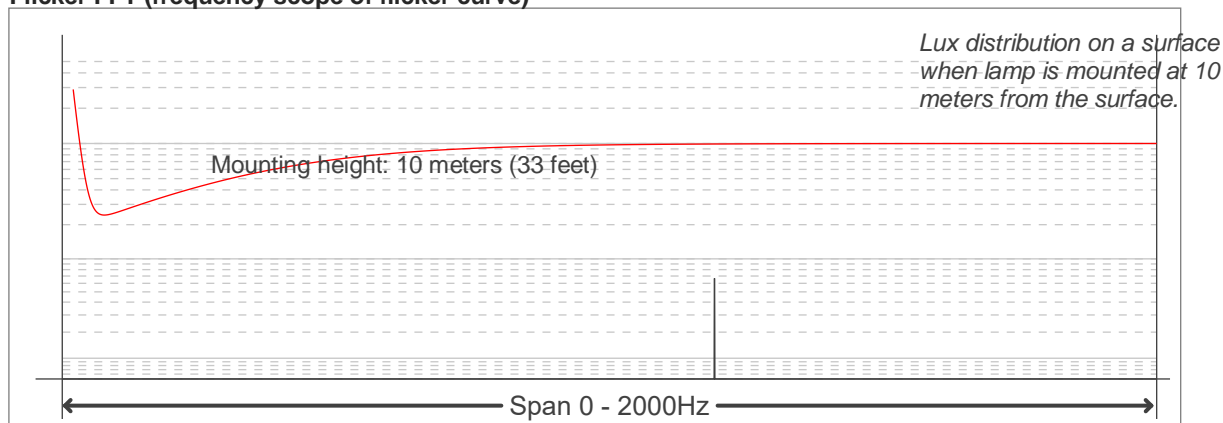
Flicker curve (complete sampled flicker signal)



Flicker frame (frame of one flicker period)



Flicker FFT (frequency scope of flicker curve)



Flicker results:

Flicker frequency:		1176.47 Hz	
Flicker index:	0.05	JA8/10 40Hz	0.07 %
Flicker percentage:	24.63 %	JA8/10 90Hz	0.15 %
SVM: (Visual flicker)	0.13	JA8/10 200Hz	0.3 %
PstLM	0.04	JA8/10 400Hz	0.59 %
Mp	0.03	JA8/10 1000Hz	2.55 %

Flicker conditions:

Sample rate:	20000 samples/second
--------------	----------------------